

TECHNICAL SPECIFICATIONS

Material	stainless steel
Color	■ silver
Thickness	1.2 mm

Joining angle	Ref
60°	42305
45°	42339
90°	42723
135°	42725
120°	C28242N00

RELATED PROFILES > ARCHITECTURAL



DIPOK-US
A01233



DIPOKET
A01177



GIZA
A05556



GIZA-LL-T
A02479



GIZA-LL-UST
A02724N



KOPRO
A06367



KOZEL
A06454



KOZMA
A18040



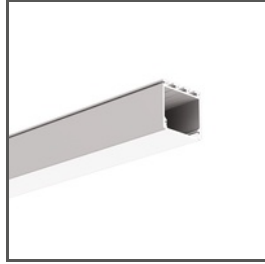
KOZUS
A07823



KOZUS-CR
A00600



LARKO
A05552



LIPOD
A05554



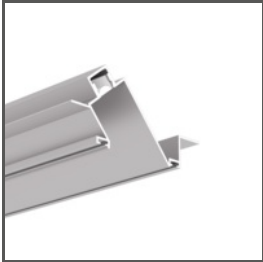
LOKOM
A05553



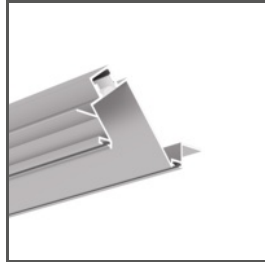
PDS-T
A02057



PDS-UST
A02725



POK-US
A01234

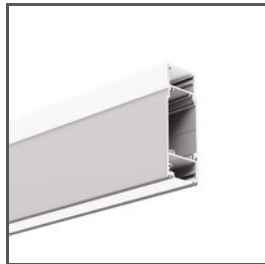


POKET
A01179

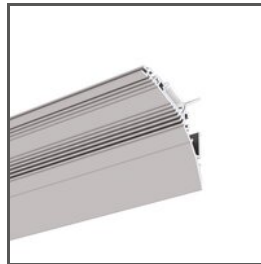
RELATED PROFILES > FOR BUILDING WALL LAMPS AND ILLUMINATING WALLS



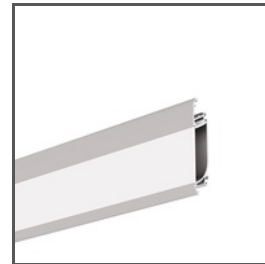
KIDES
A18031



KIDES-DUO
A18032



LIT-L
A18033



OBIT
A04826

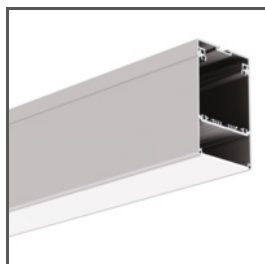


WERKIN
A18025

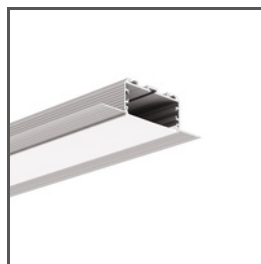
RELATED PROFILES > FOR MAIN LIGHTING



DES
A18030



GLADES
A18036



KOZEL-50
A00757

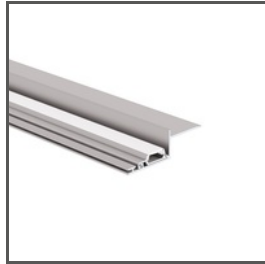


KOZUS-50
A00958

RELATED PROFILES > ILLUMINATION OF COVES AND ARCHITECTURAL NICHES



NISA-KON
A18027



NISA-KRA
A18026



NISA-NI
A18029

RELATED PROFILES > MINIMALISTIC



KOZEL-10
A01575

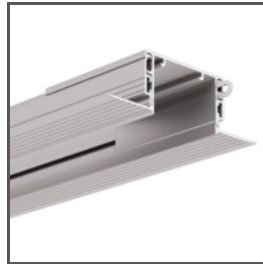
RELATED PROFILES > MOUNTING TRACKS



HR-MAX-T
A01827



HR-MAX-TW
A01828



RAM-3035-KOZE
A18056



RAM-KOZE-100
A18057



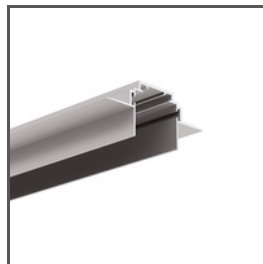
RAM-KOZE-50
A18055



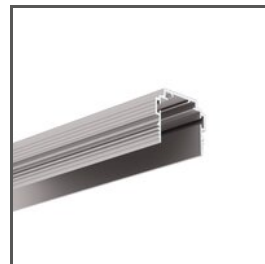
RAM-TEK-100
A18061



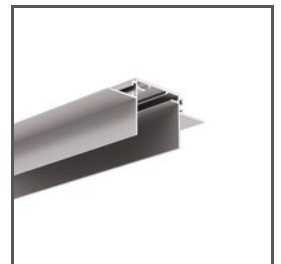
RAM-TEK-50
A18059



TEKNIK-ZM
A00399



TEKNIK-ZM-TK
A01554



TEKUS-ZM
A01293

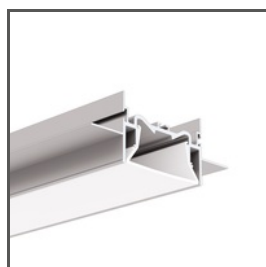


TPK-4
A18044

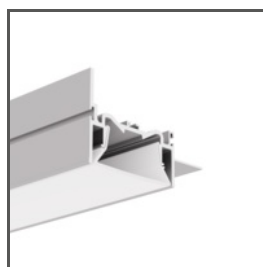
RELATED PROFILES > STRETCH CEILINGS



FOLED
A08332V1



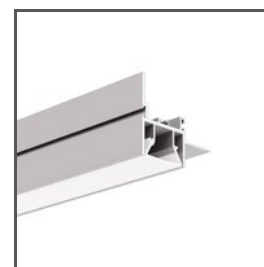
FOLED-50
A03632



FOLED-50-BOK
A57945



FOLED-50-SUF
A03631



FOLED-BOK
A08334V1

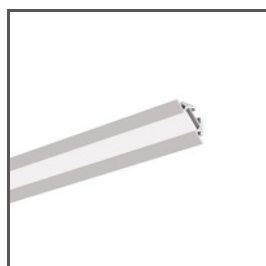


FOLED-SUF
A08333V1

RELATED PROFILES > UNIVERSAL



KUBIK-45
A07697



PAC-ALU
A04370