



TECHNICAL SPECIFICATIONS

Material	stainless steel
Color	■ silver
Thickness	1.2 mm

Joining angle	Ref
45°	42315
60°	42317
120°	42321
135°	42727

RELATED PROFILES > ARCHITECTURAL



DIPOK-US
A01233



DIPOKET
A01177



GIZA
A05556



GIZA-LL-T
A02479



GIZA-LL-UST
A02724N



KOPRO
A06367



KOZEL
A06454



KOZMA
A18040



KOZUS
A07823

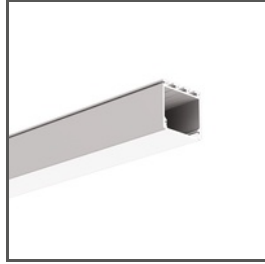


KOZUS-CR
A00600

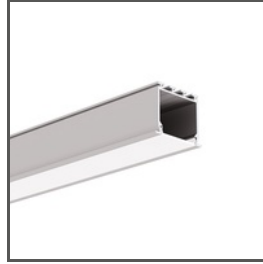
Connector ZM-NA-PION



LARKO
A05552



LIPOD
A05554



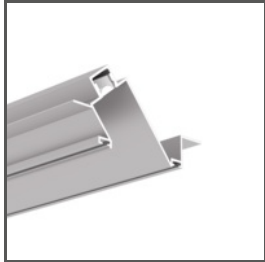
LOKOM
A05553



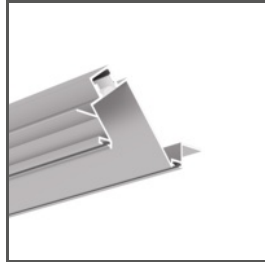
PDS-T
A02057



PDS-UST
A02725



POK-US
A01234

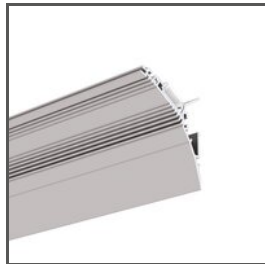


POKET
A01179

RELATED PROFILES > FOR BUILDING WALL LAMPS AND ILLUMINATING WALLS



KIDES-DUO
A18032



LIT-L
A18033

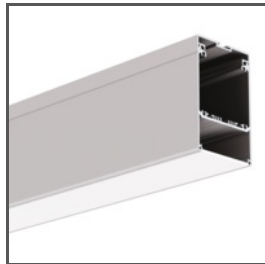


PLAKIN-DUO
A18069

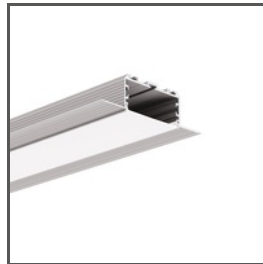
RELATED PROFILES > FOR MAIN LIGHTING



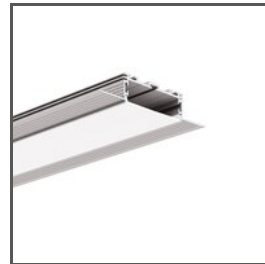
DES
A18030



GLADES
A18036



KOZEL-50
A00757

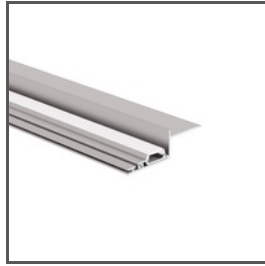


KOZUS-50
A00958

RELATED PROFILES > ILLUMINATION OF COVES AND ARCHITECTURAL NICHES



NISA-KON
A18027



NISA-KRA
A18026



NISA-NI
A18029

RELATED PROFILES > MINIMALISTIC



KOZEL-10
A01575

RELATED PROFILES > MOUNTING TRACKS



RAM-3035-KOZE
A18056



RAM-KOZE-100
A18057



RAM-KOZE-50
A18055



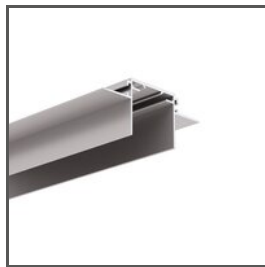
RAM-TEK-100
A18061



RAM-TEK-50
A18059



TEKNIK-ZM
A00399



TEKUS-ZM
A01293



TPK-4
A18044

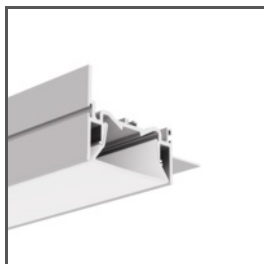
RELATED PROFILES > STRETCH CEILINGS



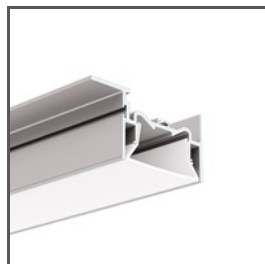
FOLED
A08332V1



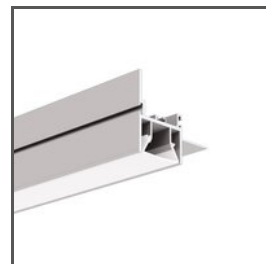
FOLED-50
A03632



FOLED-50-BOK
A57945



FOLED-50-SUF
A03631



FOLED-BOK
A08334V1



FOLED-SUF
A08333V1

RELATED PROFILES > UNIVERSAL



KUBIK-45
A07697