

Fastener UCHO-ZM

Ref. C28192N00, C28192L07

Ref. arch 42512, 42525



- Suspension with any type of hook, bracket or wire
- Easy installation without removing the end caps

APPLICATION

- for suspending LED lighting fixtures

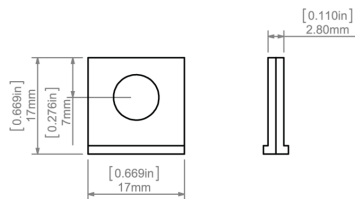
MOUNTING

- to the lighting fixture, using a small lock
- loop or hook passed through the hole in both parts of the fastener

ADDITIONAL INFORMATION

- fastener composed of two symmetrical elements

TECHNICAL DRAWING



TECHNICAL SPECIFICATIONS

Material	aluminum
Width	0.67"
Height	0.67"
Thickness	0.11"
Lifting capacity	66 lb

Color	Ref
■ silver anodized	C28192N00 42512
■ black anodized	C28192L07 42525

Fastener UCHO-ZM

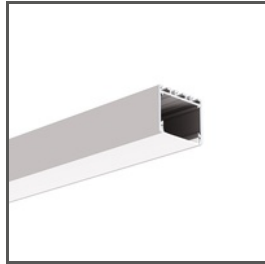
Ref. C28192N00, C28192L07

Ref. arch 42512, 42525

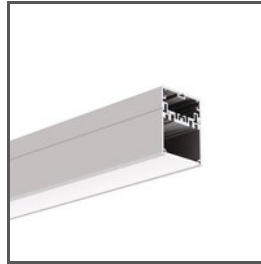
RELATED PROFILES > ARCHITECTURAL



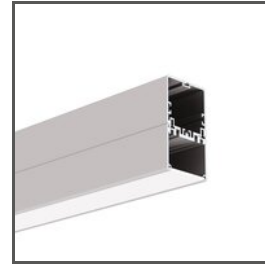
3035
A18039
Ref. arch 18039



3035-O
A08441
Ref. arch B8441



4050
A18050
Ref. arch 18050



4050-W
A18051
Ref. arch 18051



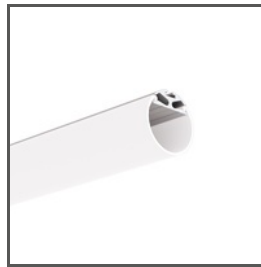
GIZA
A05556
Ref. arch B5556



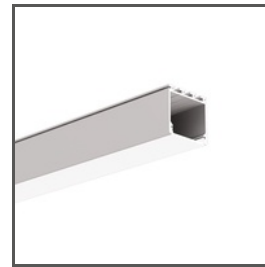
GIZA-DUO-LL
A02162
Ref. arch C2162



GIZA-LL
A00758
Ref. arch C0758



JAZ
A08547
Ref. arch B8547



LIPOD
A05554
Ref. arch B5554

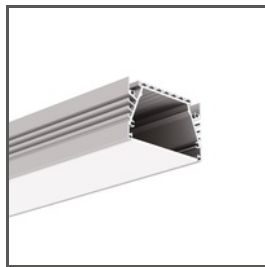


OPK-4
A00370
Ref. arch C0370

RELATED PROFILES > FOR MAIN LIGHTING



LIPOD-50
A02609
Ref. arch C2609



SEPOD
A06593
Ref. arch B6593

RELATED PROFILES > MINIMALISTIC



PIKO-ZM
A01168
Ref. arch C1168

RELATED PROFILES > UNIVERSAL

Fastener UCHO-ZM

Ref. C28192N00, C28192L07

Ref. arch 42512, 42525



OLEK
A08505
Ref. arch B8505



PDS-ZM-PLUS
A02056
Ref. arch C2056



PDS-ZMG
A01418
Ref. arch C1418

RELATED SYSTEMS > GENERAL LIGHTING SYSTEMS

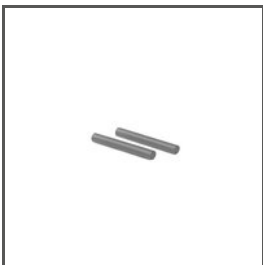


3035-KOZE
A08441+A18056
Ref. arch 18056+B8441



PK-4
A18044+A00370
Ref. arch 18044+C0370

RELATED ACCESSORIES > OTHER ACCESSORIES > SECURITY AND BLOCKS



BLOCK
ZM
C28194N00
Ref. arch 42520

RELATED ACCESSORIES > OTHER ACCESSORIES > WIRES AND RODS

Fastener UCHO-ZM

Ref. C28192N00, C28192L07

Ref. arch 42512, 42525



LINKA STALOWA

FI-1 1m

C24522N00

Ref. arch 1397