

Fastener PUSZ-PRET-ZM

Ref. C28161N00, C28161L10, C28161L07

Ref. arch 42276, 42276L9010, 42276L9005

- Lengthwise suspension on a rod
- High lifting capacity
- Single pole conductivity possible

APPLICATION

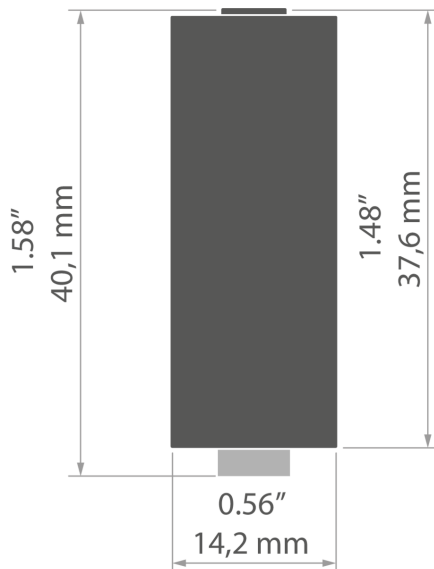
- for suspending LED lighting fixtures

MOUNTING

- to the lighting fixture, using a small lock
- to the rod, using a plug and nuts



TECHNICAL DRAWING



TECHNICAL SPECIFICATIONS

Width	0.56"
Height	1.58"
Diameter	14.2 mm
Working temperature	127.4°F
Lifting capacity	66 lb
Maximum current	12 A
Loss of voltage	0.06 V

Material	Color	Ref
stainless steel, brass, nylon	■ silver	C28161N00 42276
aluminum, brass, nylon	□ white	C28161L10 42276L9010
aluminum, brass, nylon	■ black	C28161L07 42276L9005

Fastener PUSZ-PRET-ZM

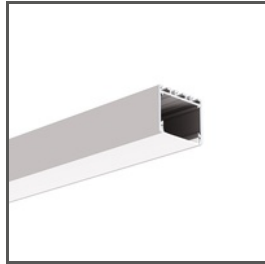
Ref. C28161N00, C28161L10, C28161L07

Ref. arch 42276, 42276L9010, 42276L9005

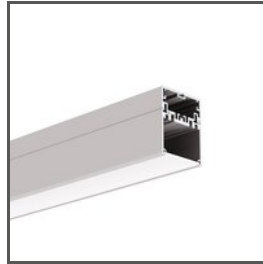
RELATED PROFILES > ARCHITECTURAL



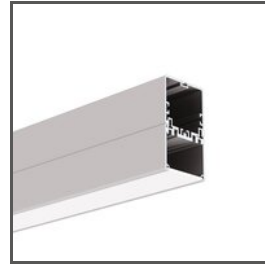
3035
A18039
Ref. arch 18039



3035-O
A08441
Ref. arch B8441



4050
A18050
Ref. arch 18050



4050-W
A18051
Ref. arch 18051



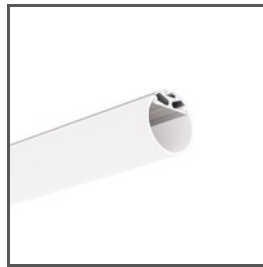
GIZA
A05556
Ref. arch B5556



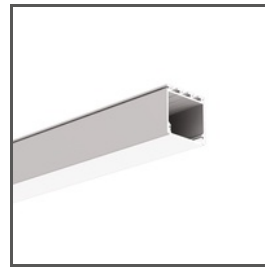
GIZA-DUO-LL
A02162
Ref. arch C2162



GIZA-LL
A00758
Ref. arch C0758



JAZ
A08547
Ref. arch B8547



LIPOD
A05554
Ref. arch B5554

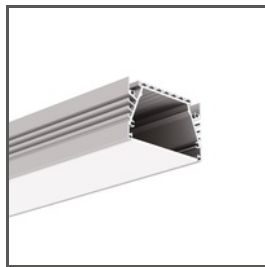


OPK-4
A00370
Ref. arch C0370

RELATED PROFILES > FOR MAIN LIGHTING



LIPOD-50
A02609
Ref. arch C2609



SEPOD
A06593
Ref. arch B6593

RELATED PROFILES > UNIVERSAL



OLEK
A08505
Ref. arch B8505



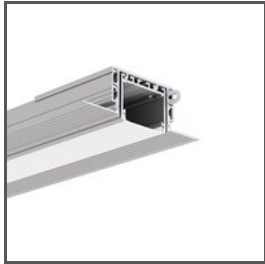
PDS-ZM-PLUS
A02056
Ref. arch C2056

Fastener PUSZ-PRET-ZM

Ref. C28161N00, C28161L10, C28161L07

Ref. arch 42276, 42276L9010, 42276L9005

RELATED SYSTEMS > GENERAL LIGHTING SYSTEMS

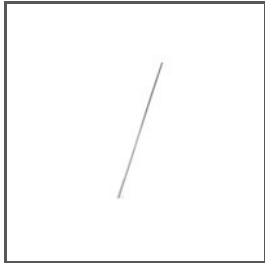


3035-KOZE
A08441+A18056
Ref. arch 18056+B8441



PK-4
A18044+A00370
Ref. arch 18044+C0370

RELATED ACCESSORIES > OTHER ACCESSORIES > WIRES AND RODS



ROD
100 PUSZ 1 m
42518