

Fastener PUSZ-PRET-ZD

Ref. C28167N00, C28167L10, C28167L07

Ref. arch 42282, 42282L9010, 42282L9005



- Lengthwise suspension on a rod
- High lifting capacity
- Single pole conductivity possible

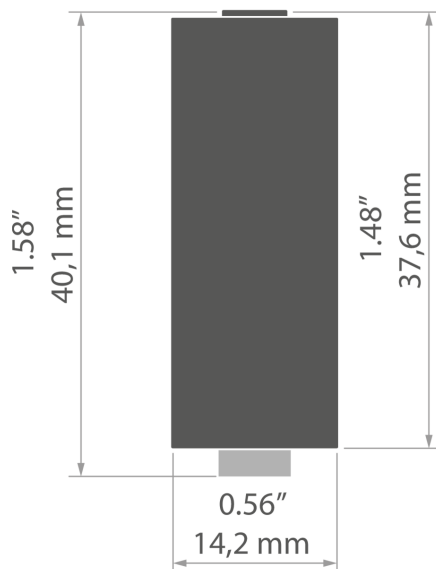
APPLICATION

- for suspending LED lighting fixtures

MOUNTING

- to the lighting fixture, with a large lock
- to the rod, using a plug and nuts

TECHNICAL DRAWING



TECHNICAL SPECIFICATIONS

Width	0.56"
Height	1.58"
Conducting electricity	yes
Working temperature	127.4°F
Lifting capacity	66 lb
Maximum current	12 A
Loss of voltage	0.06 V

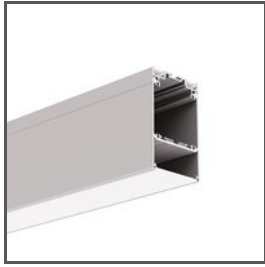
Material	Color	Ref
stainless steel, brass, nylon	■ silver	C28167N00 42282
aluminum, brass, nylon	□ white lacquered	C28167L10 42282L9010
aluminum, brass, nylon	■ black lacquered	C28167L07 42282L9005

Fastener PUSZ-PRET-ZD

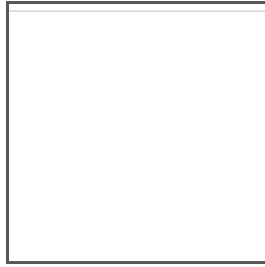
Ref. C28167N00, C28167L10, C28167L07

Ref. arch 42282, 42282L9010, 42282L9005

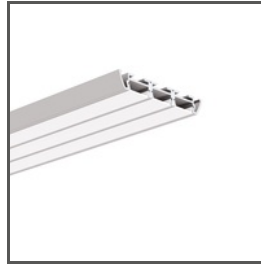
RELATED PROFILES > FOR MAIN LIGHTING



DES
A18030
Ref. arch 18030

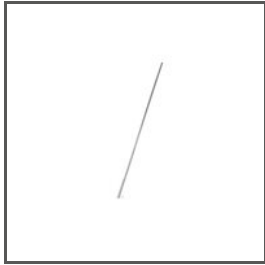


GLADES
A18036
Ref. arch 18036



TRIADA
A04476
Ref. arch B4476

RELATED ACCESSORIES > OTHER ACCESSORIES > WIRES AND RODS



ROD
100 PUSZ 1 m
42518