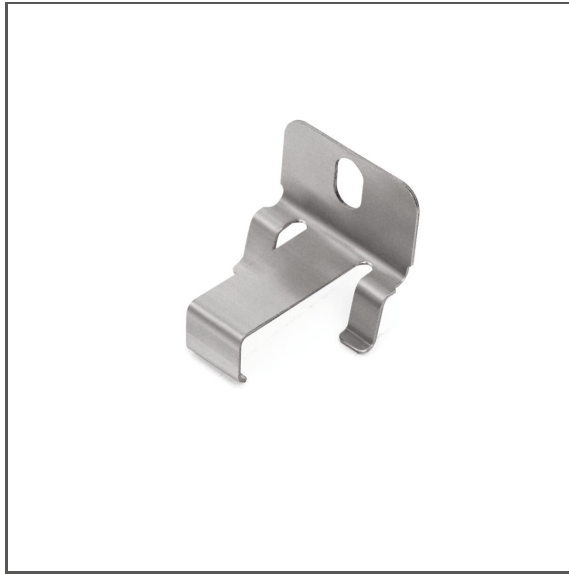


Mounting bracket PDS-STN-90G

Ref. C24370



- Lighting direction of the fixture parallel to the surface
- Possibility of attaching to the extrusion before mounting to the surface
- The position can be corrected after screwing into place
- High mechanical and weather resistance

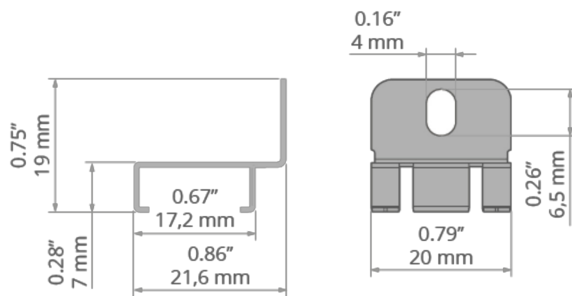
APPLICATION

- for mounting LED lighting fixtures

MOUNTING

- to the surface, using properly selected screws
- to the lighting fixture, with hooks
- easy installation and deinstallation of lighting fixtures by snapping in and out

TECHNICAL DRAWING



TECHNICAL SPECIFICATIONS

Material	stainless steel
Width	0.8"
Height	0.7"
Corrosion resistance	yes
Lifting capacity	18.7 lb

Color	Ref
■ silver	C24370N00
□ white	C24370L10
■ black	C24370L07

SAMPLE PROJECTS



Mounting bracket PDS-STN-90G

Ref. C24370

RELATED PROFILES > ARCHITECTURAL



REGULATOR
A18068

RELATED PROFILES > UNIVERSAL



45-16
A08504



MICRO-PLUS
A02966



PDS-4-PLUS
A01263



TAMI
A05390



TAPO
A01919

RELATED ACCESSORIES > OTHER ACCESSORIES > ADDITIONAL ITEMS



ADAPTERS SET
ZM-16
C29001C00