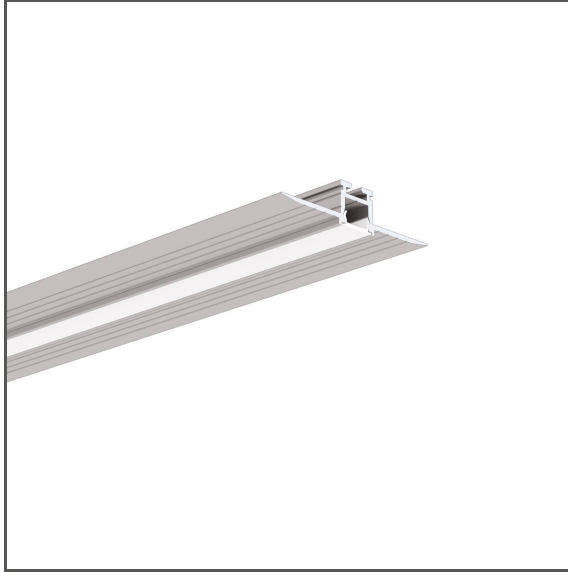


KOZEL-10 Extrusion

Ref. A01575



- Mounting to drywall
- Possibility of installing sealed 5K series LED strips
- Minimum height
- No collision with the ceiling structure
- Line of light flush with the surface
- Non visible aluminum elements
- Small bending radius

APPLICATION

- decorative lighting

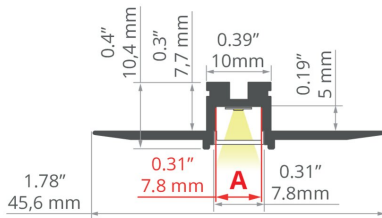
MOUNTING

- in drywall, with mounting adhesive

ADDITIONAL INFORMATION

- in order to protect the lighting fixture during installation, a TECH-10 protective insert should be used
- smooth transition from a recessed into a suspended fixture
- when choosing a different length of profiles / covers than available in the standard, you should additionally choose the cutting service at KLUŚ

TECHNICAL DRAWING



TECHNICAL SPECIFICATIONS

Material	aluminum
Color	■ silver non anodized
Possible fixture IP	20
Possible fixture shapes	linear, polygonal
Profile cross-section	rectangular
Width	1.8"
Height	0.4"
LED gluing width A	0.3"
Width of the glow	7.2 mm
Max power of a single KLUŚ LED strip	2.9 W/ft
Possibility of obtaining a line of light	yes
Possibility of bending	yes
Radius of the light arc	yes
Inward	400 mm
Outdoor	400 mm
Building type	Commercial, Retail, Residential, Hotel / Restaurant, Entertainment/ Arts

Length	Ref
39.4"	A01575N_1
78.9"	A01575N_2

KOZEL-10 Extrusion

Ref. A01575

Facility zone	bathroom, lobby / foyer, office, decorative, media rooms / av
The cover is cut to the length of the profile	yes
Can be easily connected into runs	yes
Mounting to drywall	yes
To cover with plaster	yes
Wire out back of extrusion	yes

Line of Light Guide



Clean Line of Light (Pixel free imaging)



Centered Line of Light



Visible Dotting from Diodes

SAMPLE PROJECTS



SIMILAR EXTRUSIONS > SURFACE MOUNTED



PIKO-45 Extrusion
A00014



PIKO-O Extrusion
A01167



PIKO Extrusion
A08288

SIMILAR EXTRUSIONS > SUSPENDED



PIKO-ZM Extrusion
A01168

RELATED ACCESSORIES > COVERS

NAME	KEY FEATURES	MATERIAL	MATERIAL TRANSMITTANCE	COLOR	REF.
PIKO-7 Cover	<ul style="list-style-type: none"> - For indoor and outdoor applications - perfectly diffusing - UV resistant - Thin line of light 	PMMA	17 %	black	B17001B
			43 %	satin	B17034S
BENCO-7 Cover	<ul style="list-style-type: none"> - indoor use - perfect for bent extrusions 	silicon	53 %	frosted	B17069F

RELATED ACCESSORIES > END CAPS

NAME	MATERIAL	COLOR	REF.
PIKO-ZM End cap	ABS	black	C24307C07
		gray	C24307C02
		white	C24307C10
PIKO-ZM-OTW End cap with hole	ABS	black	C24307C07TW
		gray	C24307C02TW
		white	C24307C10TW

RELATED ACCESSORIES > RELATED LED > CRI 90+

Name	Key features	IP protection rating	Power consumption	Ref.
K-1091-24 LED tape	- Thin line of light	20	2.8 W/ft	K-22-1091-24 K-25-1091-24 K-27-1091-24 K-30-1091-24 K-35-1091-24 K-40-1091-24 K-50-1091-24

Name	Key features	IP protection rating	Power consumption	Ref.
K-SHD-0960-24 LED tape	- ideal for use with black covers - high LED density	20	2.9 W/ft	K-SHD22-0960-24 K-SHD25-0960-24 K-SHD27-0960-24 K-SHD30-0960-24 K-SHD35-0960-24 K-SHD40-0960-24 K-SHD50-0960-24
KWP-5KSHD-0960-24 LED tape	- easy snap-in installation - high LED density - ideal for use with black covers	65	2.9 W/ft	KWP-5KSHD27-0960-24 KWP-5KSHD30-0960-24 KWP-5KSHD35-0960-24 KWP-5KSHD40-0960-24 KWP-5KSHD50-0960-24
K-SHD-0960-24 LED tape	- ideal for use with black covers - high LED density	20	2.9 W/ft	K-SHD22-0960-24 K-SHD25-0960-24 K-SHD27-0960-24 K-SHD30-0960-24 K-SHD35-0960-24 K-SHD40-0960-24 K-SHD50-0960-24
LED tape KWP-5KSHD-0960-24	- easy snap-in installation - high LED density - ideal for use with black covers	65	2.9 W/ft	KWP-5KSHD27-0960-24 KWP-5KSHD30-0960-24 KWP-5KSHD35-0960-24 KWP-5KSHD40-0960-24 KWP-5KSHD50-0960-24

RELATED ACCESSORIES > RELATED LED > RGB / RGB-W / RGB-CTT

Name	Key features	IP protection rating	Power consumption	Ref.
K-RGB-1560-24 LED tape	- RGB	20	4.8 W/ft	K-RGB-1560-24

RELATED ACCESSORIES > RELATED LED

Name	Key features	IP protection rating	Power consumption	Ref.
LED tape K-0450-24	- Thin line of light	20	1.4 W/ft	K-27-0450-24 K-30-0450-24 K-35-0450-24 K-40-0450-24 K-50-0450-24
LED tape K-BT-0450-24	- Thin line of light - LED tape for bent profiles	20	1.4 W/ft	K-BT27-0450-24 K-BT30-0450-24 K-BT35-0450-24 K-BT40-0450-24 K-BT50-0450-24

RELATED ACCESSORIES > RELATED LED > BENDABLE TAPE

Name	Key features	IP protection rating	Power consumption	Ref.
K-BT-0910-24 LED tape	- LED tape for bent profiles	20	2.8 W/ft	K-BT27-0910-24 K-BT30-0910-24 K-BT35-0910-24 K-BT40-0910-24 K-BT50-0910-24

RELATED ACCESSORIES > OTHER ACCESSORIES > TECHNICAL AND PROTECTIVE INSERTS

KOZEL-10 Extrusion

Ref. A01575

Name	Key features	Material	Color	Ref.
TECH-10 Protective insert	- Protection of the fixture interior during installation	PVC	■ gray satin	C24533C02_1 C24533C02_2 C24533C02_3

RELATED ACCESSORIES > OTHER ACCESSORIES > CONNECTORS

Name	Material	Color	Ref.
ZM Connector	stainless steel	■ silver	42716 42717 42720 42728 C28070N00 C28071N00 C28072N00 C28073N00 C28074N00 C28075N00 C28243N00
ZM-NA Connector	stainless steel	■ silver	42305 42339 42723 42724 42725 C28242N00
ZM-PION Connector	stainless steel	■ silver	42314 42316 42320 42718 42719 C28084N00 C28085N00 C28086N00 C28087N00 C28088N00
ZM-NA-PION Connector	stainless steel	■ silver	42315 42317 42321 42726 42727

RELATED ACCESSORIES > OTHER ACCESSORIES

Name	Material	Color	Ref.
Connector ZM-Y	stainless steel	■ silver	C28082N00
ZM-X Connector	stainless steel	■ silver	C28079N00 C28080N00 C28081N00
ZM-T Connector	stainless steel	■ silver	C28076N00 C28077N00 C28078N00

RELATED ACCESSORIES > ELECTRONICS > SWITCHES

Name	Key features	IP protection rating	Ref.
Proximity switch UNI	- touchless switch - width only 7mm	20	E61579