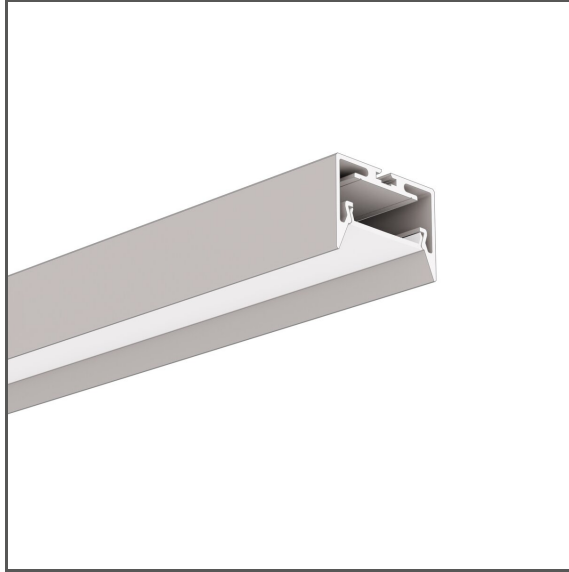


# GIZA-LL-ZMG Extrusion

Ref. A04501



- Reduced glare by recessing the cover in the profile
- Smooth extrusions walls
- Higher efficiency from the lighting fixture when using the DILENSO cover
- No light gaps at the ends of the profiles
- Reduced light gaps on profile joints when the Blocker is used
- Wide range of accessories
- Possibility to use current modules with efficiency up to 190lm/W and CRI>90. Available upon request.

## APPLICATION

- main and decorative lighting

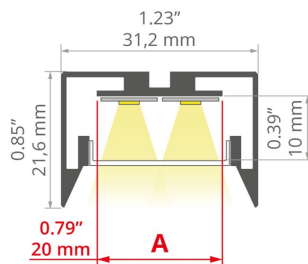
## MOUNTING

- to the surface or suspended, using dedicated accessories

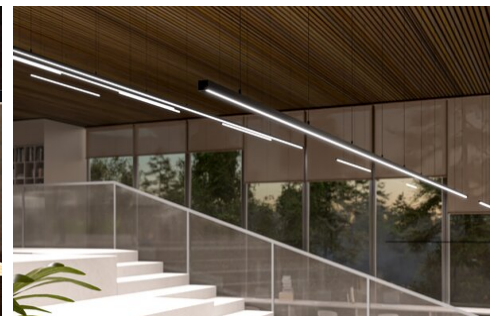
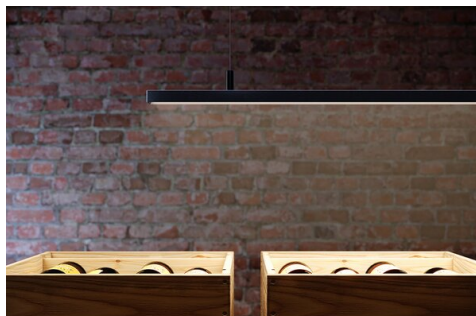
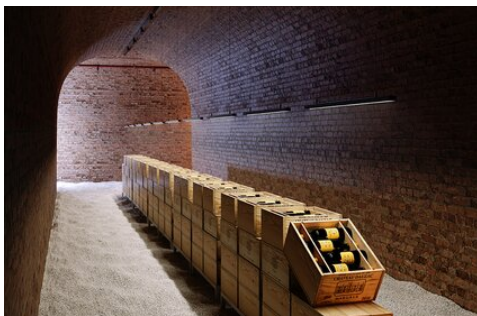
## ADDITIONAL INFORMATION

- thanks to the use of a dedicated blocker, visible light slits are avoided in the places where individual sections of the extrusion are joined
- when choosing a different length of profiles / covers than available in the standard, you should additionally choose the cutting service at KLUŚ
- NCS Premium paint option - minimum order quantity 30pcs - available on order within 14 days

## TECHNICAL DRAWING



## SAMPLE PROJECTS



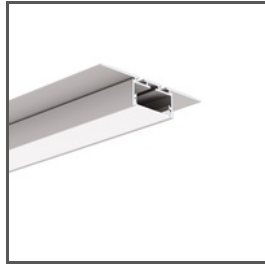
# GIZA-LL-ZMG Extrusion

Ref. A04501

## SIMILAR EXTRUSIONS > TRIMLESS



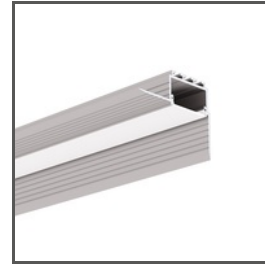
**GIZA-LL-UST Extrusion**  
A02724



**GIZA-LL-T Extrusion**  
A02479



**KOZUS Extrusion**  
A07823



**KOZUS-CR Extrusion**  
A00600

## SIMILAR EXTRUSIONS



**GIZA-DUO-LL Extrusion**  
A02162

## SIMILAR EXTRUSIONS > SURFACE MOUNTED







**GIZA Extrusion**  
A05556




**GIZA-LL Extrusion**  
A00758

## RELATED ACCESSORIES > COVERS

NAME	KEY FEATURES	MATERIAL	MATERIAL TRANSMITTANCE	COLOR	REF.
BENCO-22 Cover <span style="background-color: red; color: white; padding: 2px;">NEW</span>	 <ul style="list-style-type: none"> <li>- For indoor and outdoor applications</li> <li>- UV resistant</li> </ul>	silicon	62 %	frosted	B17209F
DILENSO-22 30°DEG Focusing cover	 <ul style="list-style-type: none"> <li>- indoor use</li> <li>- focusing</li> </ul>	PC	63 %	semi-transparent	B17173T
LIGER-22 Cover	 <ul style="list-style-type: none"> <li>- For indoor and outdoor applications</li> <li>- Ease of obtaining a line of light<sup>PC</sup></li> <li>- perfectly diffusing</li> </ul>		22 %	black	B17032B
			70 %	satın	B17032S
HS-22 Cover	 <ul style="list-style-type: none"> <li>- For indoor and outdoor applications</li> <li>- UV resistant</li> </ul>	PC	65 %	frosted	B17011F
			88 %	clear	B17011C
			90.5 %	microprism	B17011M

## RELATED ACCESSORIES > END CAPS

NAME	MATERIAL	COLOR	REF.
GIZA-LL-ZMG End cap 	ABS	<span style="display: inline-block; width: 10px; height: 10px; background-color: black; margin-right: 5px;"></span> black	C24467C07
		<span style="display: inline-block; width: 10px; height: 10px; background-color: gray; margin-right: 5px;"></span> gray	C24467C02

## RELATED ACCESSORIES > RELATED LED > CRI 90+

Name	Key features	IP protection rating	Power consumption	Ref.
KWP-GHD-1640-24 LED tape	- high LED density	65	5 W/ft	KWP-GHD22-1640-24 KWP-GHD25-1640-24 KWP-GHD27-1640-24 KWP-GHD30-1640-24 KWP-GHD35-1640-24 KWP-GHD40-1640-24 KWP-GHD50-1640-24
KWP-GHD-1910-24 LED tape	- high LED density	65	2.8 W/ft	KWP-GHD22-1910-24 KWP-GHD25-1910-24 KWP-GHD27-1910-24 KWP-GHD30-1910-24 KWP-GHD35-1910-24 KWP-GHD40-1910-24 KWP-GHD50-1910-24
LED tape K-2400-24	- high power	20	7.3 W/ft	K-27-2400-24 K-30-2400-24 K-35-2400-24 K-40-2400-24 K-50-2400-24

# GIZA-LL-ZMG Extrusion

Ref. A04501

Name	Key features	IP protection rating	Power consumption	Ref.
KWP-GHD-0530-24 LED tape		65	1.6 W/ft	WP-K-22-0530-HD-IP65-24V WP-K-25-0530-HD-IP65-24V WP-K-27-0530-HD-IP65-24V WP-K-30-0530-HD-IP65-24V WP-K-35-0530-HD-IP65-24V WP-K-40-0530-HD-IP65-24V WP-K-50-0530-HD-IP65-24V

## RELATED ACCESSORIES > RELATED LED > HIGH EFFICACY

Name	Key features	IP protection rating	Power consumption	Ref.
K-HEHD-0480-24 LED tape	- CRI over 95 - High Efficacy	20	1.5 W/ft	K-HEHD22-0480-24 K-HEHD25-0480-24 K-HEHD27-0480-24 K-HEHD30-0480-24 K-HEHD35-0480-24 K-HEHD40-0480-24 K-HEHD50-0480-24
K-HEHD-0960-24 LED tape	- CRI over 95 - High Efficacy	20	2.9 W/ft	K-HEHD22-0960-24 K-HEHD25-0960-24 K-HEHD27-0960-24 K-HEHD30-0960-24 K-HEHD35-0960-24 K-HEHD40-0960-24 K-HEHD50-0960-24
K-HEHD-1440-24 LED tape	- CRI over 95 - High Efficacy	20	4.4 W/ft	K-HEHD22-1440-24 K-HEHD25-1440-24 K-HEHD27-1440-24 K-HEHD30-1440-24 K-HEHD35-1440-24 K-HEHD40-1440-24 K-HEHD50-1440-24
LED tape K-HEHD-1920-24	- CRI over 95 - High Efficacy	20	5.9 W/ft	K-HEHD22-1920-24 K-HEHD25-1920-24 K-HEHD27-1920-24 K-HEHD30-1920-24 K-HEHD35-1920-24 K-HEHD40-1920-24 K-HEHD50-1920-24
KWP-HEHD-0480-24 LED tape	- High Efficacy	65	1.5 W/ft	KWP-HEHD22-0480-24 KWP-HEHD25-0480-24 KWP-HEHD27-0480-24 KWP-HEHD30-0480-24 KWP-HEHD35-0480-24 KWP-HEHD40-0480-24 KWP-HEHD50-0480-24
KWP-HEHD-0960-24 LED tape	- CRI over 95 - High Efficacy	65	2.9 W/ft	KWP-HEHD22-0960-24 KWP-HEHD25-0960-24 KWP-HEHD27-0960-24 KWP-HEHD30-0960-24 KWP-HEHD35-0960-24 KWP-HEHD40-0960-24 KWP-HEHD50-0960-24
KWP-HEHD-1440-24 LED tape	- CRI over 95 - High Efficacy	65	4.4 W/ft	KWP-HEHD22-1440-24 KWP-HEHD25-1440-24 KWP-HEHD27-1440-24 KWP-HEHD30-1440-24 KWP-HEHD35-1440-24 KWP-HEHD40-1440-24 KWP-HEHD50-1440-24

Name	Key features	IP protection rating	Power consumption	Ref.
K-HEHD-0320-24 LED tape	- CRI over 95 - High Efficacy	20	1 W/ft	K-HEHD22-0320-24 K-HEHD25-0320-24 K-HEHD27-0320-24 K-HEHD30-0320-24 K-HEHD35-0320-24 K-HEHD40-0320-24 K-HEHD50-0320-24

## RELATED ACCESSORIES > RELATED LED > RGB / RGB-W / RGB-CTT

Name	Key features	IP protection rating	Power consumption	Ref.
K-RGBW-1920-120-24 LED tape	- RGBW (3000K)	20	5.9 W/ft	K-RGBW-1920-120-24
KWP-RGB-1920-24 LED tape	- RGB	65	5.9 W/ft	KWP-RGB-1920-24
K-RGB27T65-1200-24 LED tape	- RGB+Tunable White	20	3.7 W/ft	K-RGB27T65-1200-24
LED tape KWP-RGB27T65-1200-24	- RGB+Tunable White	65	3.7 W/ft	KWP-RGB27T65-1200-24
KWP-RGBW-1920-24 LED tape	- RGB	65	5.9 W/ft	KWP-RGBW-1920-24
K-RGB-1560-24 LED tape	- RGB	20	4.8 W/ft	K-RGB-1560-24
K-RGB-0700-120-24 LED tape	- RGB	20	2.1 W/ft	K-RGB-0700-120-24
KWP-RGB-0700-120-24 LED tape	- RGB	65	2.1 W/ft	KWP-RGB-0700-120-24
K-RGB-1200-120-24 LED tape	- RGB	20	3.7 W/ft	K-RGB-1200-120-24
KWP-RGB-1200-120-24 LED tape	- RGB	65	3.7 W/ft	KWP-RGB-1200-120-24
K-RGBW-1920-160-24 LED tape	- RGBW (3000K)	20	5.9 W/ft	K-RGBW-1920-160-24
KWP-GRGBW-1920-120-24 LED tape	- RGBW (3000K)	65	5.9 W/ft	KWP-GRGBW-1920-120-24

## RELATED ACCESSORIES > RELATED LED > ADJUSTABLE WHITE / DIM TO WARM

Name	Key features	IP protection rating	Power consumption	Ref.
LED tape K-22/50-1728-24V	- Tuneable white 2200K-5000K	20	5.3 W/ft	K-22/50-1728-24
LED tape K-30/18-1770-24V		20	3.5 W/ft	K-30/18-1770-24
LED tape KWP-22/50-1728-24	- Tuneable white 2200K-5000K	65	5.3 W/ft	KWP-22/50-1728-24
LED tape KWP-30/18-1770-24		65	3.5 W/ft	KWP-30/18-1770-24
LED tape KWP-30/18-1770-010-24		65	3.5 W/ft	KWP-30/18-1770-010-24
LED tape K-30/18-1770-010V-24V		20	3.5 W/ft	K-30/18-1770-010V-24V
LED tape KWP-G22/50-1728-24	- Tuneable white 2200K-5000K	65	5.3 W/ft	KWP-G22/50-1728-24

## RELATED ACCESSORIES > RELATED LED > CRI 95+

Name	Key features	IP protection rating	Power consumption	Ref.
LED tape K-CR-1210-24	- CRI over 95	20	1.5 W/ft	K-CR22-1210-24 K-CR25-1210-24 K-CR27-1210-24 K-CR30-1210-24 K-CR35-1210-24 K-CR40-1210-24 K-CR50-1210-24

# GIZA-LL-ZMG Extrusion

Ref. A04501





Name	Key features	IP protection rating	Power consumption	Ref.
LED tape K-CR-1220-24	- CRI over 95	20	2.9 W/ft	K-CR22-1220-24 K-CR25-1220-24 K-CR27-1220-24 K-CR30-1220-24 K-CR35-1220-24 K-CR40-1220-24 K-CR50-1220-24
LED tape K-CR-1275-24	- CRI over 95	20	4.4 W/ft	K-CR22-1275-24 K-CR25-1275-24 K-CR27-1275-24 K-CR30-1275-24 K-CR35-1275-24 K-CR40-1275-24 K-CR50-1275-24
K-CRHD-1820-24 LED tape	- CRI over 95 - high LED density	20	5.6 W/ft	K-CRHD22-1820-24 K-CRHD25-1820-24 K-CRHD27-1820-24 K-CRHD30-1820-24 K-CRHD35-1820-24 K-CRHD40-1820-24 K-CRHD50-1820-24
K-CRHD-1910-24 LED tape	- CRI over 95 - high LED density	20	2.8 W/ft	K-CRHD22-1910-24 K-CRHD25-1910-24 K-CRHD27-1910-24 K-CRHD30-1910-24 K-CRHD35-1910-24 K-CRHD40-1910-24 K-CRHD50-1910-24
KWP-CR-1220-24 LED tape	- CRI over 95	65	2.9 W/ft	KWP-CR22-1220-24 KWP-CR25-1220-24 KWP-CR27-1220-24 KWP-CR30-1220-24 KWP-CR35-1220-24 KWP-CR40-1220-24 KWP-CR50-1220-24
KWP-CR-1275-24 LED tape	- CRI over 95	65	4.4 W/ft	KWP-CR22-1275-24 KWP-CR25-1275-24 KWP-CR27-1275-24 KWP-CR30-1275-24 KWP-CR35-1275-24 KWP-CR40-1275-24 KWP-CR50-1275-24
KWP-CRHD-1910-24 LED tape	- CRI over 95 - high LED density	65	2.8 W/ft	KWP-CRHD22-1910-24 KWP-CRHD25-1910-24 KWP-CRHD27-1910-24 KWP-CRHD30-1910-24 KWP-CRHD35-1910-24 KWP-CRHD40-1910-24 KWP-CRHD50-1910-24
KWP-HEHD-1440-24-40C LED tape	- High Efficacy - cold weather -40F	65	4.4 W/ft	KWP-HEHD22-1440-24-40C KWP-HEHD25-1440-24-40C KWP-HEHD27-1440-24-40C KWP-HEHD30-1440-24-40C KWP-HEHD35-1440-24-40C KWP-HEHD40-1440-24-40C KWP-HEHD50-1440-24-40C
K-CRHD-0530-24 LED tape,	- CRI over 95	20	1.6 W/ft	K-CRHD22-0530-24 K-CRHD25-0530-24 K-CRHD27-0530-24 K-CRHD30-0530-24 K-CRHD35-0530-24 K-CRHD40-0530-24 K-CRHD50-0530-24

Name	Key features	IP protection rating	Power consumption	Ref.
KWP-CRHD-0530-24 LED tape		65	1.6 W/ft	KWP-CRHD22-0530-24 KWP-CRHD25-0530-24 KWP-CRHD27-0530-24 KWP-CRHD30-0530-24 KWP-CRHD35-0530-24 KWP-CRHD40-0530-24 KWP-CRHD50-0530-24







## RELATED ACCESSORIES > RELATED LED > BENDABLE TAPE

Name	Key features	IP protection rating	Power consumption	Ref.
K-VBT-0720-24 LED tape	- LED tape for bent profiles	20	2.2 W/ft	K-VBT27-0720-24 K-VBT30-0720-24 K-VBT35-0720-24 K-VBT40-0720-24 K-VBT50-0720-24
K-BT-0910-24 LED tape	- LED tape for bent profiles	20	2.8 W/ft	K-BT27-0910-24 K-BT30-0910-24 K-BT35-0910-24 K-BT40-0910-24 K-BT50-0910-24











## RELATED ACCESSORIES > OTHER ACCESSORIES > MOUNTING BRACKETS

Name	Key features	Material	Color	Ref.
NEO-ZM-3 Fastener set	- 3 pieces for heavy fixtures	magnet	 silver	C28105N00
NEO-ZM-4 Fastener set	- 4 pieces for light fixtures	magnet	 silver	C28106N00
Fastener set NEO-ZM-PLUS-3	- 3 pieces for heavy fixtures	magnet	 silver	C28107N00
Fastener set NEO-ZM-PLUS-4	- 4 pieces for heavy fixtures	magnet	 silver	C28108N00

## RELATED ACCESSORIES > OTHER ACCESSORIES > FASTENERS AND HEADS FOR EXTRUSIONS

Name	Key features	Material	Color	Ref.
FI-8-LIN-ZM Fastener	- Installation in the ZM system	stainless steel, PA	 silver  white  black	C28170N00 C28170L10 C28170L07
FI-8-PRET-ZM Fastener	- Installation in the ZM system	Materiał, Material, multiselect	 silver  white  black	C28189N00 C28189L10 C28189L07

## RELATED ACCESSORIES > OTHER ACCESSORIES > CONDUCTIVE FASTENERS AND HEADS FOR EXTRUSIONS

Name	Key features	Material	Color	Ref.
PUSZ-ZM Fastener 	- Power supply - mounting in the ZM system	stainless steel aluminum aluminum	 silver  white lacquered  black lacquered	C20010N00 C20010L10 C20010L07
FI-8-LIN-ZMZ Fastener	- Power supply - mounting in the ZM system	stainless steel, steel, PA, EPDM aluminum, PA, EPDM aluminum, PA, EPDM	 silver  white  black	C28171N00 C28171L10 C28171L07
PUSZ-PRET-ZM Fastener	- Power supply cable - mounting in the ZM system	stainless steel, brass, nylon aluminum, brass, nylon aluminum, brass, nylon	 silver  white  black	C28161N00 C28161L10 C28161L07

## RELATED ACCESSORIES > OTHER ACCESSORIES > CANOPIES

Name	Key features	Material	Color	Ref.
Fi-60mm Canopy	- Convenient cable length adjustment, in the ZM system	steel	<input type="checkbox"/> gray lacquered <input type="checkbox"/> white lacquered <input type="checkbox"/> black lacquered	C24540L01 C24540L10 C24540L07

## RELATED ACCESSORIES > OTHER ACCESSORIES > SURFACE SPRINGS

Name	Material	Color	Ref.
GP Spring	stainless steel	<input type="checkbox"/> silver	C24500N00

## RELATED ACCESSORIES > OTHER ACCESSORIES > ADDITIONAL ITEMS

Name	Key features	Material	Color	Ref.
ZM-10 Adapters set		PC	<input checked="" type="checkbox"/> transparent	C29000C00
ZM-16 Adapters set	- Connection of the ZM system with the 45-STN mount	PC	<input checked="" type="checkbox"/> transparent	C29001C00
8x1,6 Gland		rubber		C42290C07
Blocker	- Eliminates overexposure at profile connection points	Materiał, Material, multiselect	<input type="checkbox"/> gray colored	C40707C02













## RELATED ACCESSORIES > OTHER ACCESSORIES > COUPLERS

Name	Key features	Material	Color	Ref.
L135 Coupler	- Facilitates building lighting structures	aluminum	<input type="checkbox"/> silver	L135
L135PW Coupler	- Facilitates building lighting structures	aluminum	<input type="checkbox"/> silver	L135PW
L135PZ Coupler	- Facilitates building lighting structures	aluminum	<input type="checkbox"/> silver	L135PZ
L90 Coupler	- Facilitates building lighting structures	aluminum	<input type="checkbox"/> silver	L90
L90PW Coupler	- Facilitates building lighting structures	aluminum	<input type="checkbox"/> silver	L90PW
L90PZ Coupler	- Facilitates building lighting structures	aluminum	<input type="checkbox"/> silver	L90PZ
T135L Coupler	- Facilitates building lighting structures	aluminum	<input type="checkbox"/> silver	T135L
T135R Coupler	- Facilitates building lighting structures	aluminum	<input type="checkbox"/> silver	T135R
T90 Coupler	- Facilitates building lighting structures	aluminum	<input type="checkbox"/> silver	T90
X135 Coupler	- Facilitates building lighting structures	aluminum	<input type="checkbox"/> silver	X135
X90 Coupler	- Facilitates building lighting structures	aluminum	<input type="checkbox"/> silver	X90

## RELATED ACCESSORIES > OTHER ACCESSORIES > SUSPENSION AND MOUNTING SETS

# GIZA-LL-ZMG Extrusion

Ref. A04501

Name	Key features	Material	Color	Ref.
FI-8-ZM-1 Fastener set <b>NEW</b>	- Power supply, for wall and drywall, in the ZM system	stainless steel, aluminum	 silver  white lacquered  black lacquered	C28134N00 C28134L10 C28134L07
FI-8-ZM-2 Fastener set <b>NEW</b>	- Convenient cable length adjustment, in the ZM system	stainless steel, aluminum	 silver  white lacquered  black lacquered	C28135N00 C28135L10 C28135L07
Fastener set PUSZ-ZM-1 <b>NEW</b>	- Power supply, for wall and drywall, in the ZM system	stainless steel, aluminum	 silver  white lacquered  black lacquered	C28130N00 C28130L10 C28130L07
Fastener set PUSZ-ZM-2 <b>NEW</b>	- Convenient cable length adjustment, in the ZM system	stainless steel, aluminum	 silver  white lacquered  black lacquered	C28131N00 C28131L10 C28131L07

## RELATED ACCESSORIES > OTHER ACCESSORIES > CONNECTORS

Name	Material	Color	Ref.
ZM-NA Connector	stainless steel	 silver	42305 42339 42723 42724 42725 C28242N00
ZM-NA-PION Connector	stainless steel	 silver	42315 42317 42321 42726 42727

## RELATED ACCESSORIES > ELECTRONICS > SWITCHES

Name	Key features	IP protection rating	Ref.
Proximity switch UNI	- touchless switch - width only 7mm	20	E61579