

Fastener FI-8-LIN-ZM

Ref. C28170N00, C28170L10, C28170L07

Ref. arch 42285, 42285L9010, 42285L9005

- Lengthwise suspension on a wire
- Minimum dimensions

APPLICATION

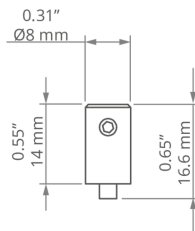
- for suspending LED lighting fixtures

MOUNTING

- to the lighting fixture, using a small lock
- to the wire with a pressure screw



TECHNICAL DRAWING



TECHNICAL SPECIFICATIONS

Material	stainless steel, PA
Width	0.31"
Height	0.65"
Diameter	8 mm
Lifting capacity	11 lb

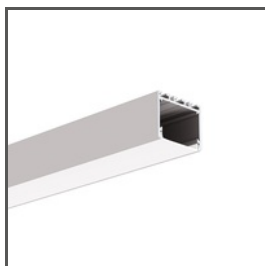
Color	Ref
■ silver	C28170N00 42285
□ white	C28170L10 42285L9010
■ black	C28170L07 42285L9005

Fastener FI-8-LIN-ZM

Ref. C28170N00, C28170L10, C28170L07

Ref. arch 42285, 42285L9010, 42285L9005

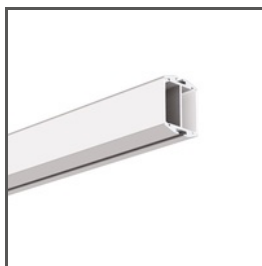
RELATED PROFILES > ARCHITECTURAL



3035-O
A08441
Ref. arch B8441



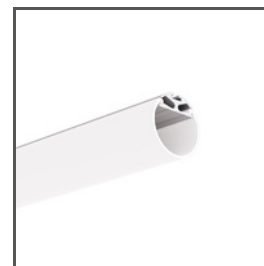
GIZA
A05556
Ref. arch B5556



GIZA-DUO-LL
A02162
Ref. arch C2162



GIZA-LL
A00758
Ref. arch C0758



JAZ
A08547
Ref. arch B8547



LIPOD
A05554
Ref. arch B5554



OPK-4
A00370
Ref. arch C0370

RELATED PROFILES > MINIMALISTIC



PIKO-ZM
A01168
Ref. arch C1168

RELATED PROFILES > UNIVERSAL



OLEK
A08505
Ref. arch B8505



PDS-ZM-PLUS
A02056
Ref. arch C2056



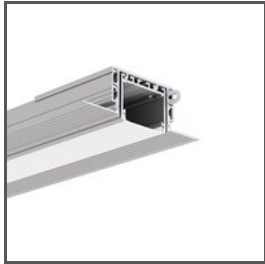
PDS-ZMG
A01418
Ref. arch C1418

Fastener FI-8-LIN-ZM

Ref. C28170N00, C28170L10, C28170L07

Ref. arch 42285, 42285L9010, 42285L9005

RELATED SYSTEMS > GENERAL LIGHTING SYSTEMS



3035-KOZE
A08441+A18056
Ref. arch 18056+B8441



PK-4
A18044+A00370
Ref. arch 18044+C0370

RELATED ACCESSORIES > OTHER ACCESSORIES > WIRES AND RODS



LINKA STALOWA
FI-1 1m
C24522N00
Ref. arch 1397



WIRE
0,5 mm
Z70499
Ref. arch 70499