

# Fastener FI-10-ZM-W

Ref. C28116N00

Ref. arch 42242

- Longitudinal suspension on a rod or wire
- Small dimensions

## APPLICATION

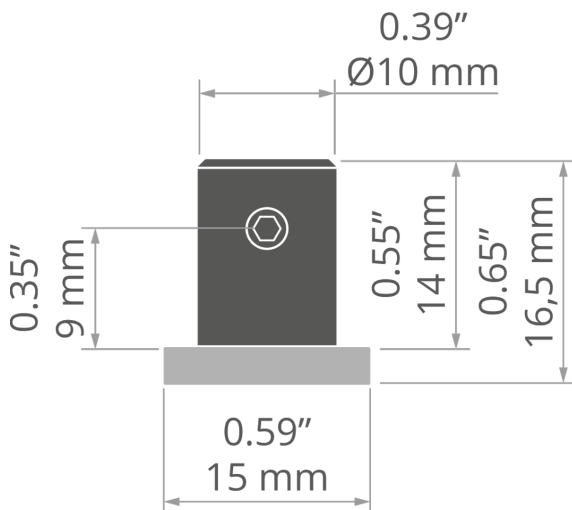
- for suspending LED lighting fixtures

## MOUNTING

- to a rod or cable, using a set bolt
- to the rod with a pressure screw



## TECHNICAL DRAWING



## TECHNICAL SPECIFICATIONS

Material	stainless steel
Color	■ silver
Width	0.59"

Height	0.65"
Diameter	10 mm
Lifting capacity	66 lb

# Fastener FI-10-ZM-W

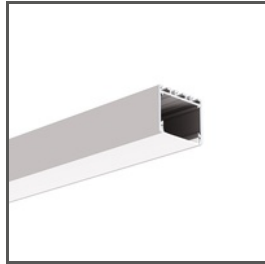
Ref. C28116N00

Ref. arch 42242

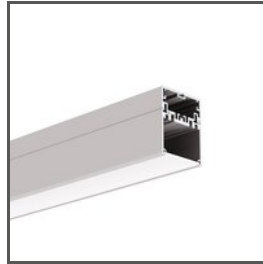
## RELATED PROFILES > ARCHITECTURAL



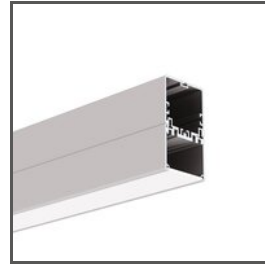
**3035**  
A18039  
Ref. arch 18039



**3035-O**  
A08441  
Ref. arch B8441



**4050**  
A18050  
Ref. arch 18050



**4050-W**  
A18051  
Ref. arch 18051



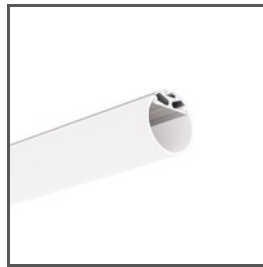
**GIZA**  
A05556  
Ref. arch B5556



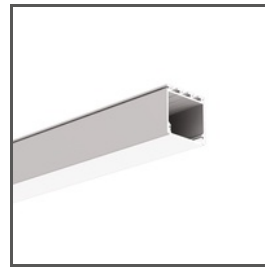
**GIZA-DUO-LL**  
A02162  
Ref. arch C2162



**GIZA-LL**  
A00758  
Ref. arch C0758



**JAZ**  
A08547  
Ref. arch B8547



**LIPOD**  
A05554  
Ref. arch B5554

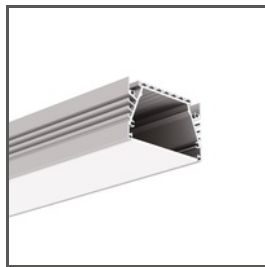


**OPK-4**  
A00370  
Ref. arch C0370

## RELATED PROFILES > FOR MAIN LIGHTING



**LIPOD-50**  
A02609  
Ref. arch C2609



**SEPOD**  
A06593  
Ref. arch B6593

## RELATED PROFILES > MINIMALISTIC



**PIKO-ZM**  
A01168  
Ref. arch C1168

## RELATED PROFILES > UNIVERSAL

# Fastener FI-10-ZM-W

Ref. C28116N00

Ref. arch 42242



## OLEK

A08505

Ref. arch B8505

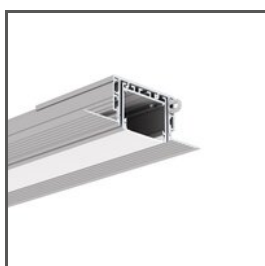


## PDS-ZM-PLUS

A02056

Ref. arch C2056

### RELATED SYSTEMS > GENERAL LIGHTING SYSTEMS



## 3035-KOZE

A08441+A18056

Ref. arch 18056+B8441

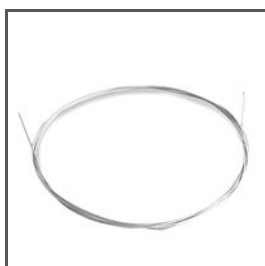


## PK-4

A18044+A00370

Ref. arch 18044+C0370

### RELATED ACCESSORIES > OTHER ACCESSORIES > WIRES AND RODS

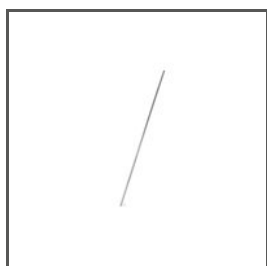


LINKA STALOWA

## FI-1 1m

C24522N00

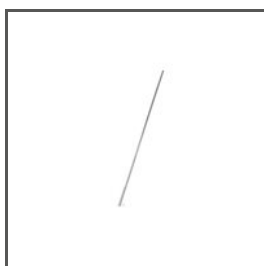
Ref. arch 1397



ROD

## FI-3 1m

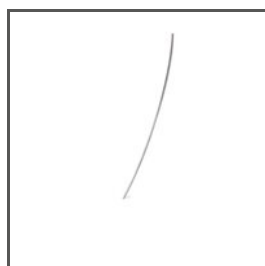
42501



ROD

## 100 PUSZ 1 m

42518



ROD

## FI-3 53 cm

C24528N00

Ref. arch 1528



ROD

## FI-3-ALU

C28196A01, C28196A07

Ref. arch 42526, 42527, 42528, 42529