

- It prevents the ingress of moisture

**APPLICATION**

- aesthetic finish and protection of the interior of the lighting fixture

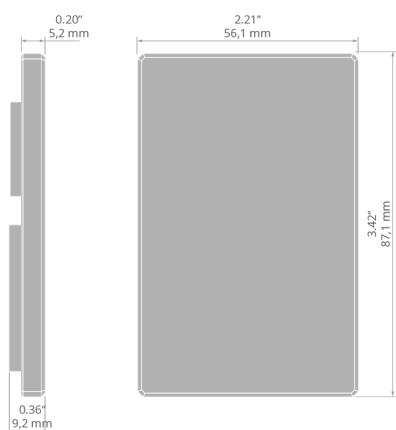
**MOUNTING**

- to the extrusion, using bolts (included)

**ADDITIONAL INFORMATION**

- end-cap composed of three elements

**TECHNICAL DRAWING**



**TECHNICAL SPECIFICATIONS**

Material	stainless steel	Height	3.4"
Color	silver	Width	2.2"
Shape	rectangular	Corrosion resistance	yes

**SAMPLE PROJECTS**

# End cap DES

Ref. C28209A01

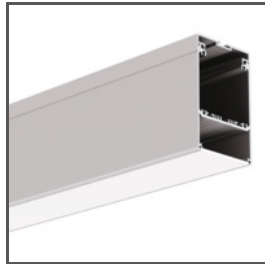


---

## RELATED PROFILES > FOR MAIN LIGHTING



**DES**  
A18030



**GLADES**  
A18036