

Cover BENCO-22

Ref. B17209



- installation in bent profiles
- Additional chamber for sealing the LED strip
- Cover offered in sections up to 10 m

APPLICATION

- LED protection and light diffusion in lighting fixtures

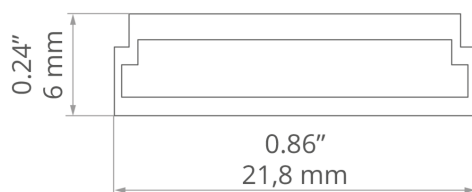
MOUNTING

- Snapped in a dedicated profile

ADDITIONAL INFORMATION

- standard lengths of KLUŚ profiles and covers: 1000 mm (tolerance ± 1.5 mm) and 2005 mm / 3010 mm (tolerance + 5 mm); for selected covers: 6050 mm, 10050 mm (tolerance + 5 mm)
- when choosing a different length of profiles / covers than available in the standard, you should additionally choose the cutting service at KLUŚ

TECHNICAL DRAWING



TECHNICAL SPECIFICATIONS

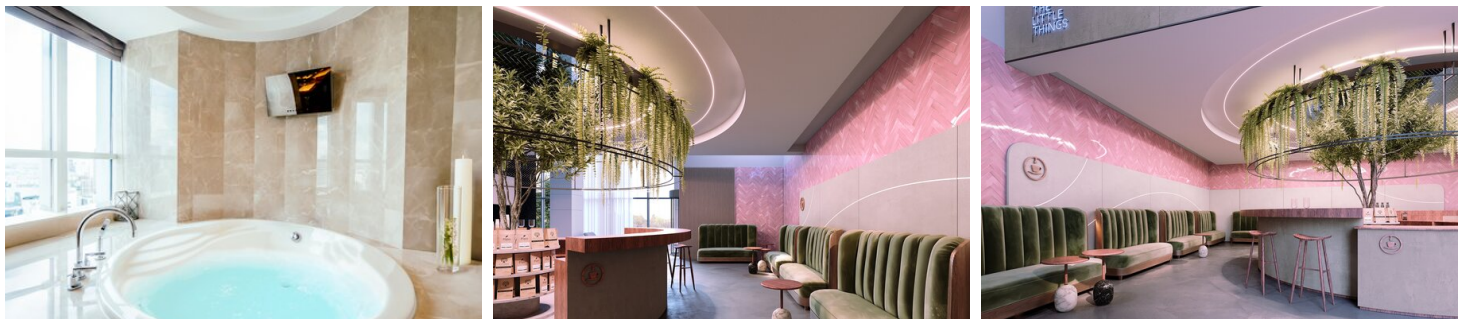
Finish	frosted
Material	silicon
Shape	flat
Maximum length on request	32'09"
Light transmission	62 %
Width	0.9"
Height	0.2"
Possibility of obtaining a line of light	yes
Possibility of twisting	yes
Possibility of bending	yes
UV resistance	yes

Length	Ref
39.4"	B17209F_1
78.9"	B17209F_2
118.5"	B17209F_3
32'09"	B17209F_10

Cover BENCO-22

Ref. B17209

SAMPLE PROJECTS



RELATED PROFILES > ARCHITECTURAL



LESTO
B5551



LARKO
A05552



LOKOM
A05553



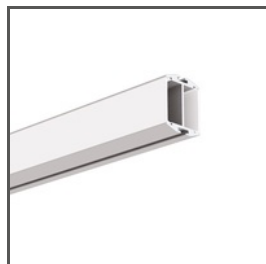
LIPOD
A05554



KOZUS-CR
A00600



GIZA-LL
A00758



GIZA-DUO-LL
A02162



GIZA-LL-T
A02479



GLAZA-LL
A02627



GIZA-LL-UST
A02724N



GLAZA-DUO
A03059



KOZEL
A06454

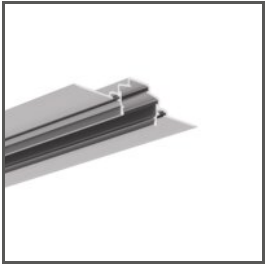


KOZUS
A07823

Cover BENCO-22

Ref. B17209

RELATED PROFILES > FACADE



FASKO
A04323