

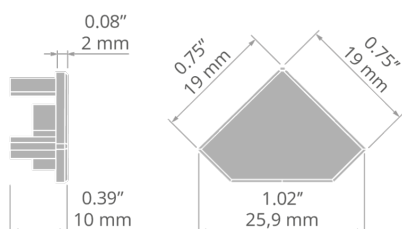
### APPLICATION

- aesthetic finish and protection of the interior of the lighting fixture

### MOUNTING

- to the extrusion, by pressing

### TECHNICAL DRAWING



### TECHNICAL SPECIFICATIONS

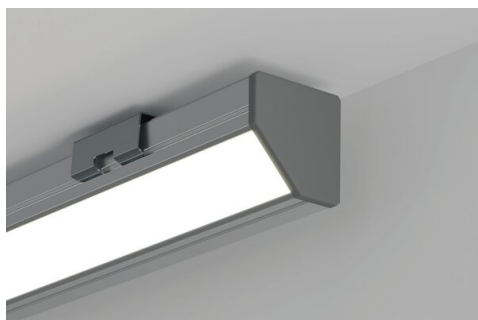
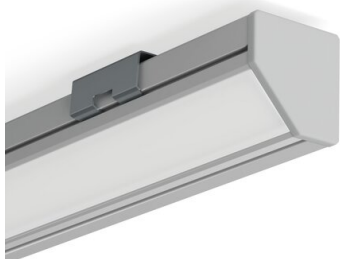
Material	ABS
Shape	polygonal
Height	0.7"
Width	0.7"
UV radiation resistance	yes

Color	Ref
■ gray	C20007C02
□ white	C20007C10
■ black	C20007C07

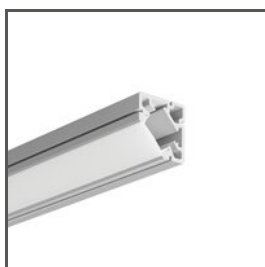
# End cap 45-PLUS

Ref. C20007

## SAMPLE PROJECTS



## PROFILE PODOBNE



**45-PLUS**  
A00005