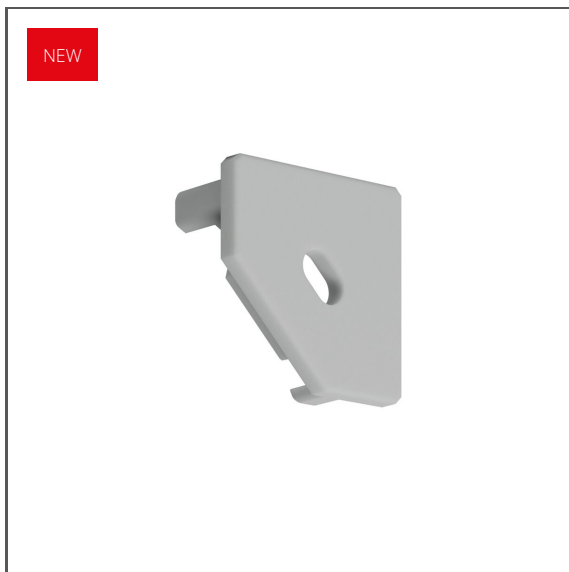


End cap with hole 45-PLUS-OTW

Ref. C20007TW



■ Cable exit hole

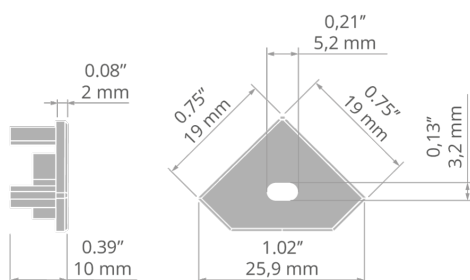
APPLICATION

- aesthetic finish and protection of the interior of the lighting fixture

MOUNTING

- to the extrusion, by pressing

TECHNICAL DRAWING



TECHNICAL SPECIFICATIONS

Material	ABS
Shape	polygonal
Height	0.7"
Width	0.7"
UV radiation resistance	yes
Hole	yes

Color	Ref
■ gray	C20007C02TW
□ white	C20007C10TW
■ black	C20007C07TW

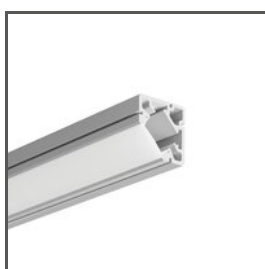
End cap with hole 45-PLUS-OTW

Ref. C20007TW

SAMPLE PROJECTS



PROFILE PODOBNE



45-PLUS
A00005